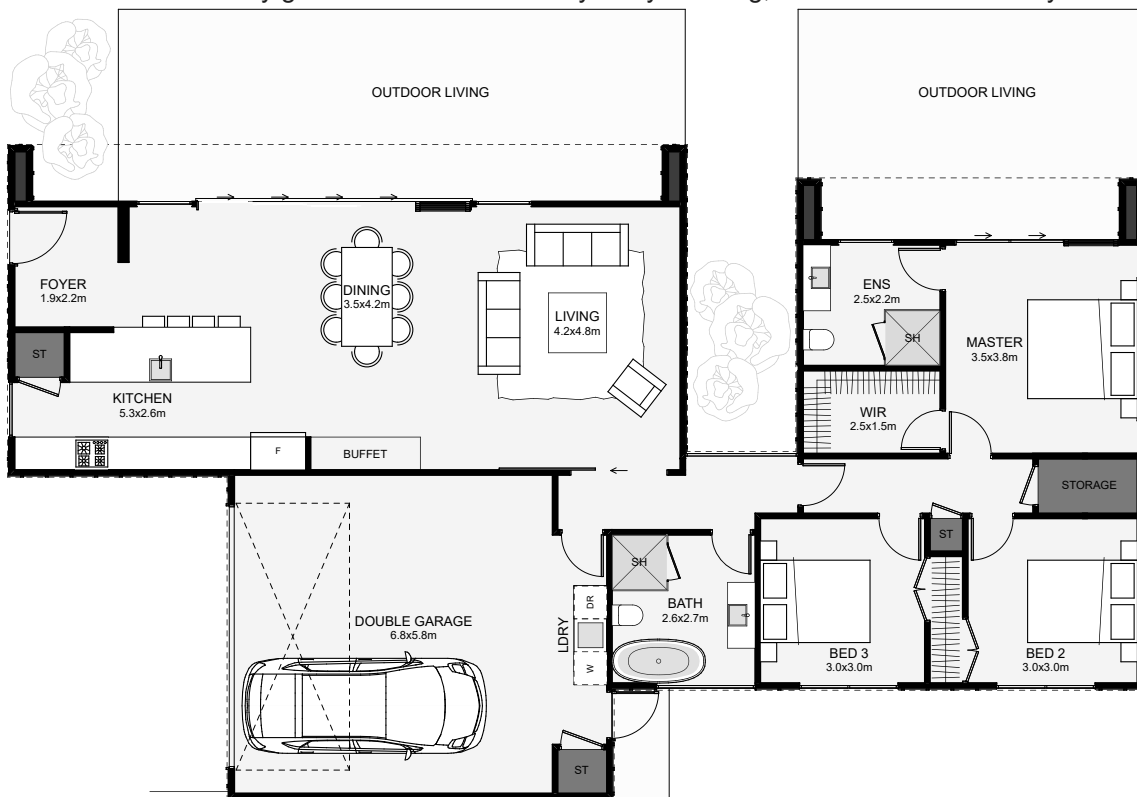




Narrow in width, yet highly functional and modern, this home does it all at the same time! Shown with board/batten and horizontal shiplap timber, this helps the home gain its edgy look. The windows and doors on the northern side are jointed by a powder-coated metal flashing to give the appearance of full-height architectural glazing. The house splits into two forms, one the master, the other the living. Bedrooms are positioned separate from the main living space, while the bathroom can still be accessed by guests. If function and style is your thing, this home is the home you're looking for.



Floor Area: 169m<sup>2</sup>

2   
 3   
 2   
 1   
 22.1m    11.3m

Contact us:

Ph: 0800 528 467

E: [sales@lavishhomes.co.nz](mailto:sales@lavishhomes.co.nz)

[www.lavishhomes.co.nz](http://www.lavishhomes.co.nz)



**LAVISH**  
HOMES