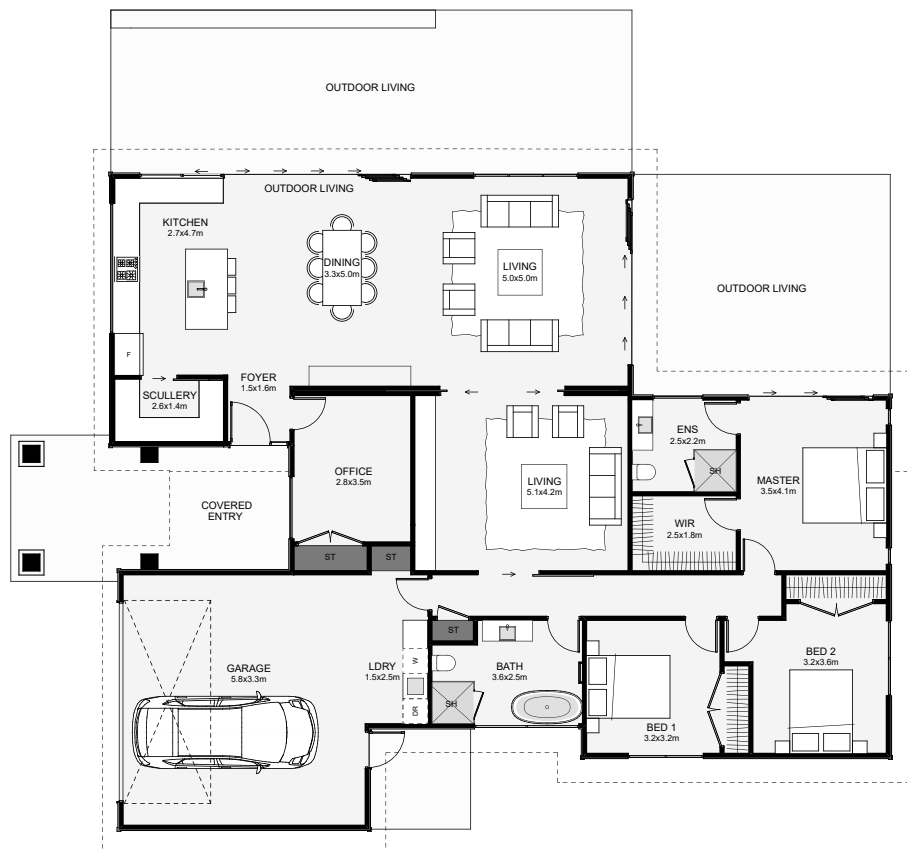




A graceful twin-mono roofline with a stone column entrance will have you feeling like you're home! If you work from home, no worries, a separate office is positioned just off the foyer. Close off or open up both living spaces depending on the occasion. With plenty of space, a scullery, walk-in wardrobe and ensuite, this new home doesn't leave anything off that list!



Floor Area: 220m<sup>2</sup>

 2  4  2  2  20.8m  15.7m

Contact us:

Ph: 0800 528 467

E: sales@lavishhomes.co.nz

www.lavishhomes.co.nz



LAVISH  
HOMES