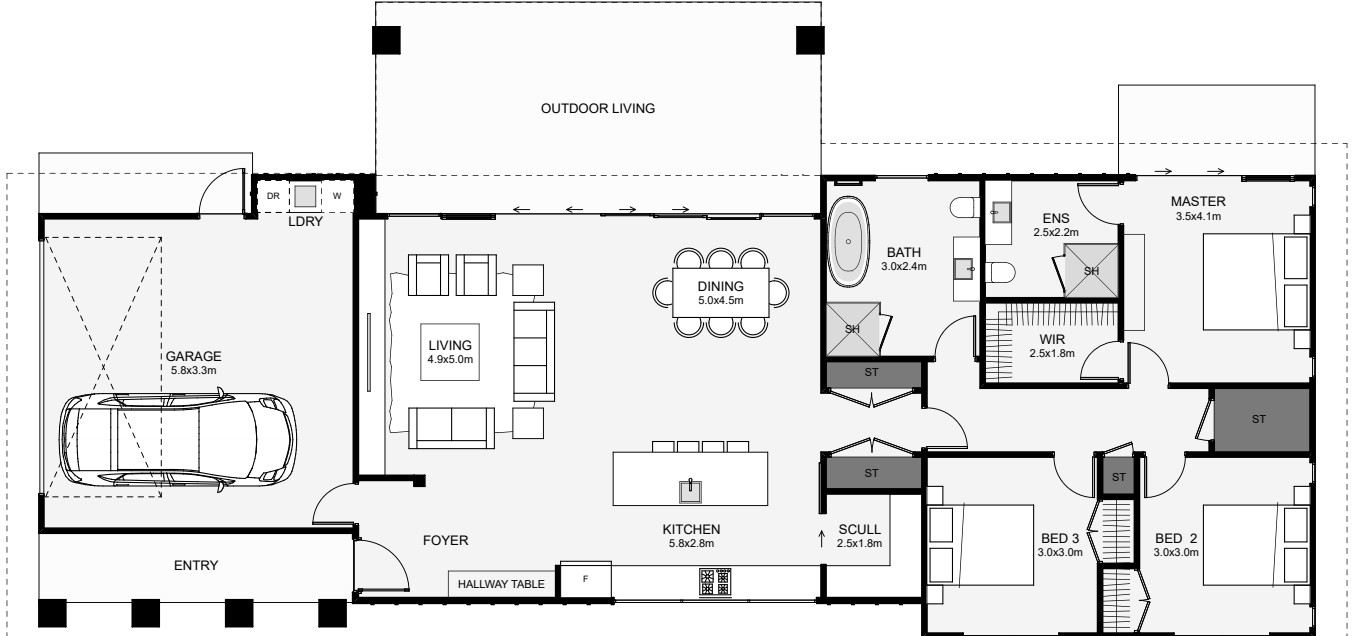




Stunning to look at and narrow in width, this home can also fit tighter sections by removing the covered outdoor living bringing the total width to only 8.6m. Inside, this home includes a scullery, a large walk-in wardrobe, an excellent sized open-planned living and plenty of storage. The exterior is broken into two cladding types which can be changed out for your preferred cladding or colours. If you've got a view, this home will soak it up and allow you to enjoy it under the optional covered outdoor living.



Floor Area: 179m²

 2  3  2  1  23.9m  11.4m

Contact us:

Ph: 0800 528 467

E: sales@lavishhomes.co.nz

www.lavishhomes.co.nz



LAVISH
HOMES