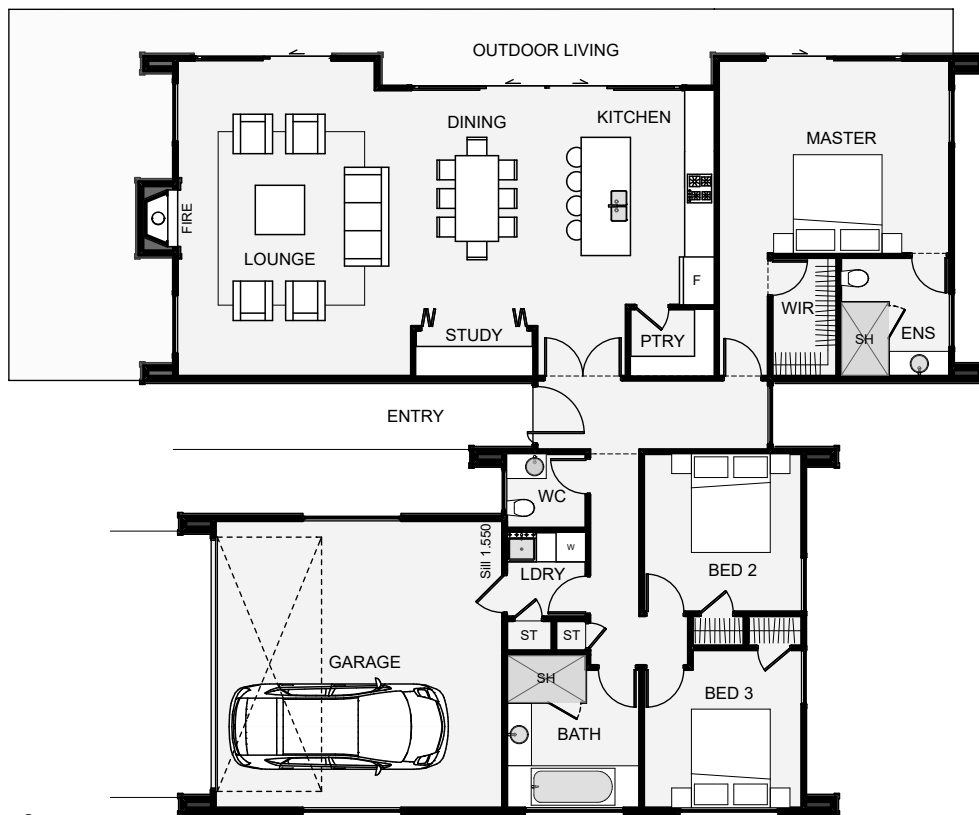




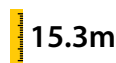




The Redcliff is a standout architectural home, especially with its use of cladding. The timber is positioned in the voids just like the flesh of a fruit when cut, while the metal wraps around the exterior like an organic skin. The shape of the home however, is very abstract. The layout is comprised of two wings with bedrooms on each end, this is to give the bedrooms great morning sun coverage. The lounge and living are positioned to make the most of sunlight right throughout the day.



Floor Area: 190m²

 2  3  2  17.1m  15.3m

Contact us:

Ph: 0800 528 467

E: sales@lavishhomes.co.nz

www.lavishhomes.co.nz



LAVISH
HOMES